



SCM40ZS-W

4.0kW

Specifications

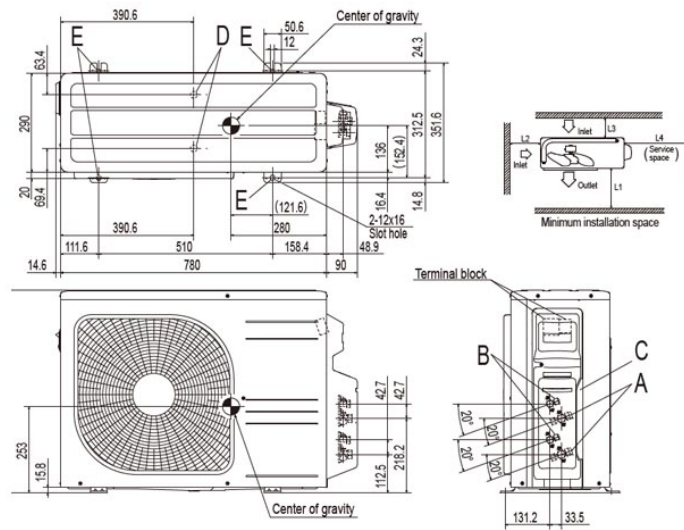
Power source			1Phase, 220 - 240V, 50Hz
Nominal cooling capacity (Min~Max)		kW	4.0(1.5~5.9)
Nominal heating capacity (Min~Max)		kW	4.5(1.3~6.3)
Power consumption	Cooling/Heating	kW	0.80(0.34~2.10) / 0.83(0.25~1.48)
EER/COP	Cooling/Heating		5.00 / 5.42
Max. running current		A	14
Sound power level	Cooling	dB(A)	62
	Heating		64
Sound pressure level	Cooling	dB(A)	49
	Heating		51
Air flow	Cooling	m ³ /min	32.5
	Heating		32.5
Exterior Dimensions	Height x Width x Depth	mm	595×780(+90) ×290
Net weight		kg	40.0
Refrigerant	Type/GWP		R32/675
	Charge	kg/TCO2Eq	1.4/0.945
Refrigerant piping size	Liquid/Gas	ø mm	6.35(1/4")×2 / 9.52(3/8")×2
Outdoor operating temperature range	Cooling	°C	-15~46
	Heating		-15~24
Number of Connectable indoor units			2
Total indoor units capacity			6.0

- The data is measured under the following conditions(ISO-T1, H1). Cooling: Indoor temp. of 27°CDB, 19°CWB, and outdoor temp. of 35°CDB. Heating: Indoor temp. of 20°CDB, and outdoor temp. of 7°CDB, 6°CWB.
- Sound level indicates the value in an anechoic chamber. During operation these values are somewhat higher due to ambient conditions.
- 'tonne(s) of CO2 equivalent' means a quantity of greenhouse gases- expressed as the product of the weight of the greenhouse gases in metric tonnes and of their global warming potential.
- In case of SRK71ZR + SRK71ZR, 2 Indoor units can be connectable. The total connecting capacity of indoor units should be between 100 – 160.

Schematics

Unit: mm

Models SCM40ZS-W, 45ZS-W



Notes

- (1) The unit must not be surrounded by walls on the four sides.
- (2) The unit must be fixed with anchor bolts. An anchor bolt must not protrude more than 15mm.
- (3) If the unit is installed in the location where there is a possibility of strong winds, place the unit such that the direction of air from the outlet gets perpendicular to the wind direction.
- (4) Leave 200mm or more space above the unit.
- (5) The wall height on the outlet side should be 1200mm or less.
- (6) The model name label is attached on the right side of the unit.

Symbol	Content
A	Service valve connection (gas side) $\phi 9.52(3/8)$ (Flare)
B	Service valve connection (liquid side) $\phi 6.35(1/4)$ (Flare)
C	Pipe / cable draw-out hole $\phi 6.35(1/4)$ (Flare)
D	Drain discharge hole $\phi 20 \times 2$ places
E	Anchor bolt hole M10-12 \times 4 places

Installation space	
L1	280 or more
L2	100 or more
L3	80 or more
L4	250 or more



SCM50ZS-W

5.0kW

Specifications

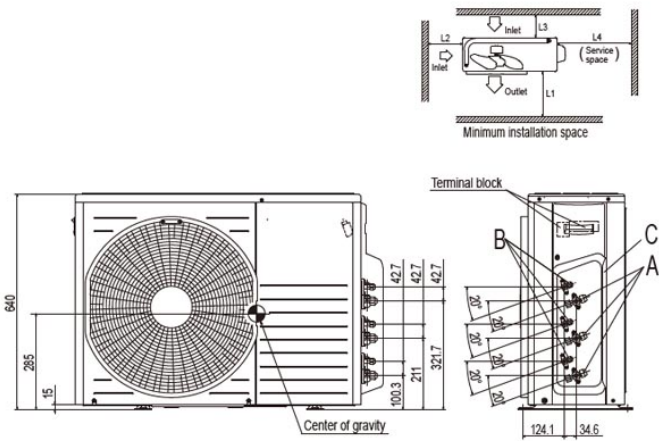
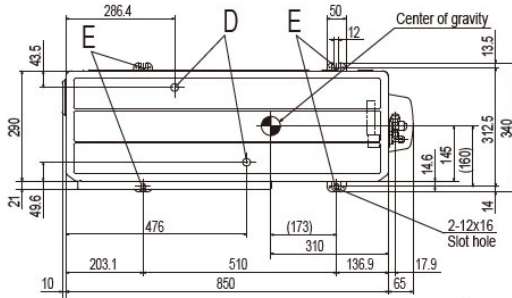
Power source			1Phase, 220 - 240V, 50Hz
Nominal cooling capacity (Min~Max)		kW	5.0(1.7~7.1)
Nominal heating capacity (Min~Max)		kW	6.0(1.0~7.5)
Power consumption	Cooling/Heating	kW	1.02(0.43~2.15) / 1.16(0.32~2.50)
EER/COP	Cooling/Heating		4.90 / 5.17
Max. running current		A	15
Sound power level	Cooling	dB(A)	62
	Heating		64
Sound pressure level	Cooling	dB(A)	49
	Heating		52
Air flow	Cooling	m ³ /min	41.0
	Heating		41.0
Exterior Dimensions	Height x Width x Depth	mm	640x850(+65)x290
Net weight		kg	48.5
Refrigerant	Type/GWP		R32/675
	Charge	kg/TCO2Eq	1.8/1.215
Refrigerant piping size	Liquid/Gas	ø mm	6.35(1/4") / 9.52(3/8")
Outdoor operating temperature range	Cooling	°C	-15~46
	Heating		-15~24
Number of Connectable indoor units			Min.2~Max.3
Total indoor units capacity			8.5

- The data is measured under the following conditions(ISO-T1, H1). Cooling: Indoor temp. of 27°CDB, 19°CWB, and outdoor temp. of 35°CDB. Heating: Indoor temp. of 20°CDB, and outdoor temp. of 7°CDB, 6°CWB.
- Sound level indicates the value in an anechoic chamber. During operation these values are somewhat higher due to ambient conditions.
- 'tonne(s) of CO2 equivalent' means a quantity of greenhouse gases- expressed as the product of the weight of the greenhouse gases in metric tonnes and of their global warming potential.
- In case of SRK71ZR + SRK71ZR, 2 Indoor units can be connectable. The total connecting capacity of indoor units should be between 100 - 160.

Schematics

Unit: mm

Models SCM50ZS-W, 60ZS-W



Notes

- (1) The unit must not be surrounded by walls on the four sides
- (2) The unit must be fixed with anchor bolts. An anchor bolt must not protrude more than 15mm.
- (3) If the unit is installed in the location where there is a possibility of strong winds, place the unit such that the direction of air from the outlet gets perpendicular to the wind direction.
- (4) Leave 200mm or more space above the unit.
- (5) The wall height on the outlet side should be 1200mm or less.
- (6) The model name label is attached on the right side of the unit.

Symbol	Content	
A	Service valve connection (gas side)	φ 6.52 (3/8") (Flare)
B	Service valve connection (liquid side)	φ 6.35 (1/4") (Flare)
C	Pipe/cable draw-out hole	
D	Drain discharge hole	φ 20×2places
E	Anchor bolt hole	M10-12×4places

Installation space	
L1	600 or more
L2	100 or more
L3	100 or more
L4	No obstacles (Service space or electrical parts)



SCM71ZS-W

7.1kW

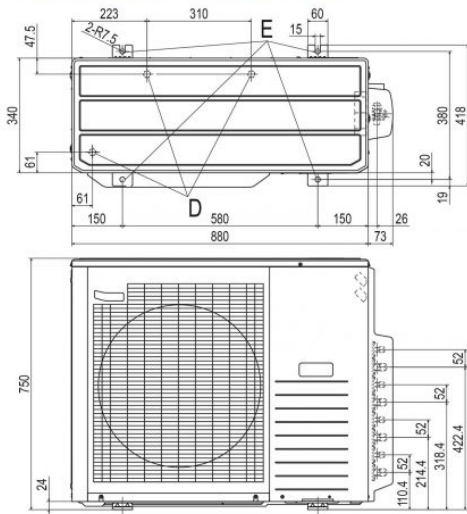
Specifications

Power source			1Phase, 220 - 240V, 50Hz
Nominal cooling capacity (Min~Max)		kW	7.1(1.8~8.8)
Nominal heating capacity (Min~Max)		kW	8.6(1.1~9.4)
Power consumption	Cooling/Heating	kW	1.42(0.48~2.75) / 1.75(0.35~3.00)
EER/COP	Cooling/Heating		5.00 / 4.91
Max. running current		A	20
Sound power level	Cooling	dB(A)	63
	Heating		67
Sound pressure level	Cooling	dB(A)	50
	Heating		54
Air flow	Cooling	m ³ /min	50.0
	Heating		56.0
Exterior Dimensions	Height x Width x Depth	mm	750×880(+73)×340
Net weight		kg	61.0
Refrigerant	Type/GWP		R32/675
	Charge	kg/TCO2Eq	2.55/1.721
Refrigerant piping size	Liquid/Gas	ø mm	6.35(1/4")×4 / 9.52(3/8")×4
Outdoor operating temperature range	Cooling	°C	-15~46
	Heating		-15~24
Number of Connectable indoor units			Min 2~Max 4
Total indoor units capacity			12.5

- The data is measured under the following conditions(ISO-T1, H1). Cooling: Indoor temp. of 27°CDB, 19°CWB, and outdoor temp. of 35°CDB. Heating: Indoor temp. of 20°CDB, and outdoor temp. of 7°CDB, 6°CWB.
- Sound level indicates the value in an anechoic chamber. During operation these values are somewhat higher due to ambient conditions.
- 'tonne(s) of CO2 equivalent' means a quantity of greenhouse gases- expressed as the product of the weight of the greenhouse gases in metric tonnes and of their global warming potential.
- In case of SRK71ZR + SRK71ZR, 2 Indoor units can be connectable. The total connecting capacity of indoor units should be between 100 – 160.

Schematics

SCM71ZS-W SCM80ZS-W SCM71ZM-S1 SCM80ZM-S1

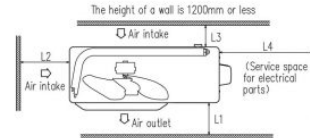
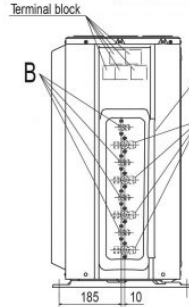


Notes

- (1) It must not be surrounded by walls on four sides.
- (2) The unit must be fixed with anchor bolts. An anchor bolt must not protrude more than 15mm.
- (3) Where the unit is subjected to strong winds, lay it in such a direction that the blower outlet faces perpendicularly to the dominant wind direction.
- (4) Leave 1.2m or more space above the unit.
- (5) A wall in front of the blower outlet must not exceed the unit's height.
- (6) The model name label is attached on the rear panel.

Minimum installation space

Symbol	Content	Examples of conditions		
		I	II	III
A	Service valve connection (gas side) $\phi 9.52$ (3/8") Flare			500
B	Service valve connection (liquid side) $\phi 6.35$ (1/4") Flare			500
C	Pipe / cable draw-out hole	L1	Open	Open
D	Drain discharge hole $\phi 20 \times 3$ places	L2	300	250
E	Anchor bolt hole M10 $\times 4$ places	L3	100	150
		L4	250	250





SRK25ZS-W

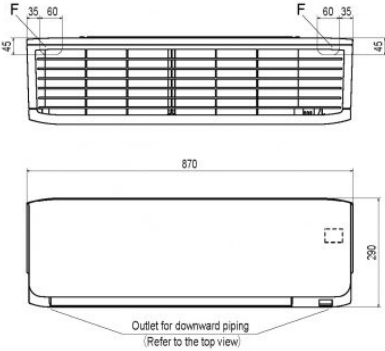
2.5kW

Specifications

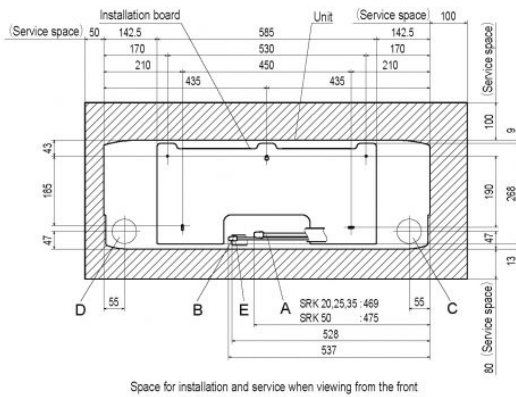
Nominal cooling capacity		kW	2.5
Nominal heating capacity		kW	3.2
Sound power level	Cooling	dB(A)	50
	Heating	dB(A)	53
Sound pressure level	Cooling(Hi/Me/Lo/Ulo)	dB(A)	36 / 28 / 23 / 19
	Heating(Hi/Me/Lo/Ulo)	dB(A)	39 / 30 / 24 / 19
Air flow	Cooling(Hi/Me/Lo/Ulo)	m ³ /min	9.9 / 8.0 / 5.9 / 5.0
	Heating(Hi/Me/Lo/Ulo)	m ³ /min	11.3 / 8.7 / 6.7 / 5.9
Exterior dimensions (H×W×D)		mm	290×870×230
Net weight		kg	9.5
Refrigerant piping size	Liquid / Gas	mm ø	6.35(1/4") / 9.52(3/8")
Clean filter			Allergen Clear Filter × 1, Photocatalytic Washable Deodorizing Filter × 1

- The data is measured under the following conditions(ISO-T1, H1). Cooling: Indoor temp. of 27°CDB, 19°CWB, and outdoor temp. of 35°CDB. Heating: Indoor temp. of 20°CDB, and outdoor temp. of 7°CDB, 6°CWB.
- Sound level the value in an anechoic chamber. During operation these values are somewhat higher due to ambient conditions.

Schematics



Symbol	Content
A	Gas piping SRK20, 25, 35 ϕ 9.52 (3/8") (Flare) SRK50 ϕ 12.7 (1/2") (Flare)
B	Liquid piping SRK50 ϕ 6.35 (1/4") (Flare)
C	Hole on wall for right rear piping ϕ 65
D	Hole on wall for left rear piping ϕ 65
E	Drain hose ϕ 65
F	Outlet for piping (on both side) VP16



- Notes (1) The model name label is attached on the right side of the unit.
(2) To connect the wired remote control, the interface kit (SC-BIKN-E) is required.

Unit:mm



SRK35ZS-W

3.5kW

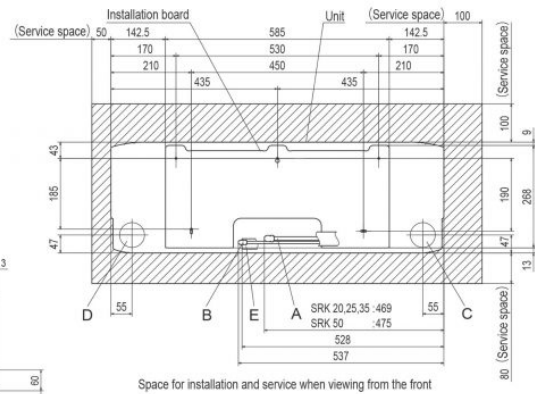
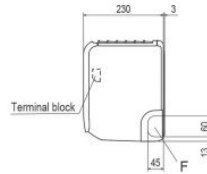
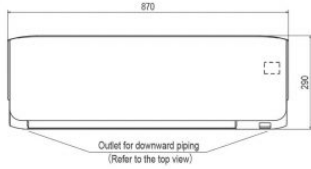
Specifications

Nominal cooling capacity		kW	3.5
Nominal heating capacity		kW	4.0
Sound power level	Cooling	dB(A)	54
	Heating	dB(A)	56
Sound pressure level	Cooling(Hi/Me/Lo/Ulo)	dB(A)	40 / 30 / 26 / 19
	Heating(Hi/Me/Lo/Ulo)	dB(A)	41 / 36 / 25 / 19
Air flow	Cooling(Hi/Me/Lo/Ulo)	m ³ /min	11.3 / 8.7 / 7.0 / 5.0
	Heating(Hi/Me/Lo/Ulo)	m ³ /min	12.3 / 11.0 / 7.0 / 5.6
Exterior dimensions (H×W×D)		mm	290×870×230
Net weight		kg	9.5
Refrigerant piping size	Liquid / Gas	mm ø	6.35(1/4") / 9.52(3/8")
Clean filter			Allergen Clear Filter × 1, Photocatalytic Washable Deodorizing Filter × 1

- The data is measured under the following conditions(ISO-T1, H1). Cooling: Indoor temp. of 27°CDB, 19°CWB, and outdoor temp. of 35°CDB. Heating: Indoor temp. of 20°CDB, and outdoor temp. of 7°CDB, 6°CWB.
- Sound level the value in an anechoic chamber. During operation these values are somewhat higher due to ambient conditions.

Schematics

SRK20ZS-W,-WB,-WT SRK25ZS-W,-WB,-WT
SRK35ZS-W,-WB,-WT SRK50ZS-W,-WB,-WT
SRK20ZS-S,-SB,-ST SRK25ZS-S,-SB,-ST
SRK35ZS-S,-SB,-ST SRK50ZS-S,-SB,-ST



Symbol	Content
A	Gas piping SRK20, 25, 35 ϕ 9.52 (3/8") (Flare)
B	Liquid piping SRK50 ϕ 12.7 (1/2") (Flare)
C	Hole on wall for right rear piping ϕ 6.35 (1/4") (Flare)
D	Hole on wall for left rear piping (ϕ 65)
E	Drain hose (ϕ 65)
F	Outlet for piping (on both side) VP16



SRK50ZS-W

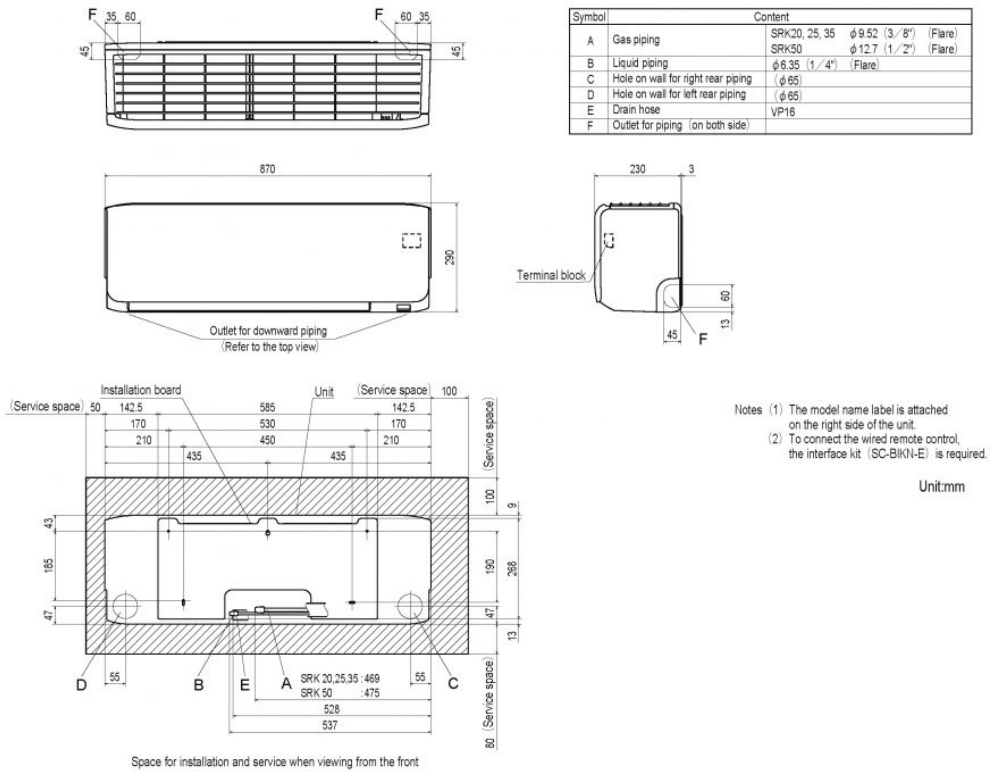
5.0kW

Specifications

Nominal cooling capacity		kW	5.0
Nominal heating capacity		kW	5.8
Sound power level	Cooling	dB(A)	59
	Heating	dB(A)	60
Sound pressure level	Cooling(Hi/Me/Lo/Ulo)	dB(A)	46 / 36 / 29 / 22
	Heating(Hi/Me/Lo/Ulo)	dB(A)	46 / 37 / 31 / 24
Air flow	Cooling(Hi/Me/Lo/Ulo)	m ³ /min	12.1 / 9.9 / 7.4 / 5.9
	Heating(Hi/Me/Lo/Ulo)	m ³ /min	13.9 / 11.2 / 9.1 / 7.4
Exterior dimensions (H×W×D)		mm	290×870×230
Net weight		kg	10.0
Refrigerant piping size	Liquid / Gas	mm ø	6.35(1/4") / 12.7(1/2")
Clean filter			Allergen Clear Filter × 1, Photocatalytic Washable Deodorizing Filter × 1

- The data is measured under the following conditions(ISO-T1, H1). Cooling: Indoor temp. of 27°CDB, 19°CWB, and outdoor temp. of 35°CDB. Heating: Indoor temp. of 20°CDB, and outdoor temp. of 7°CDB, 6°CWB.
- Sound level the value in an anechoic chamber. During operation these values are somewhat higher due to ambient conditions.

Schematics





SRK63ZR-W / SRC63ZR-W

6.3 (1.2~7.4)

Indoor Unit : SRK63ZR-W

Outdoor Unit : SRC63ZR-W

Specifications

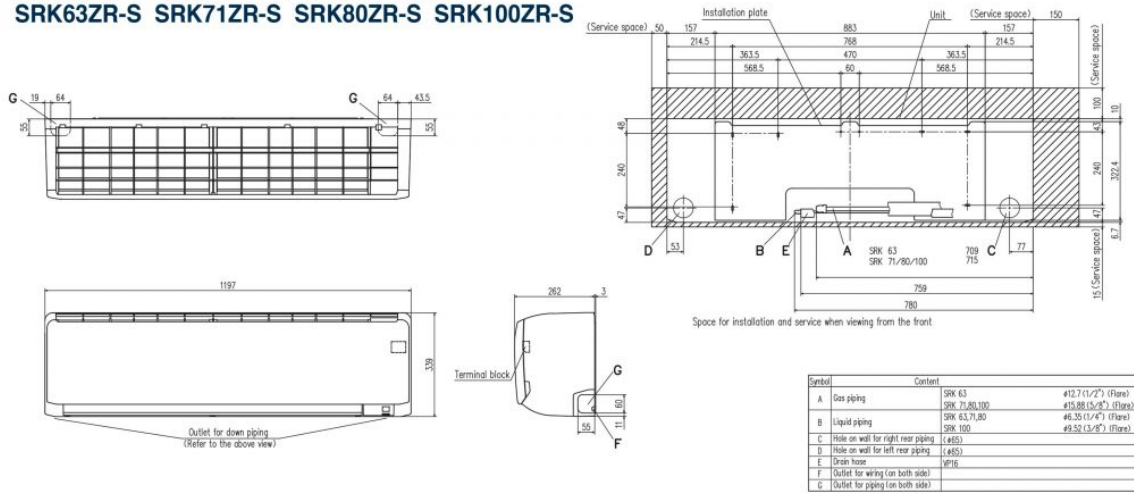
R32

Indoor unit			SRK63ZR-W
Outdoor unit			SRC63ZR-W
Power source			1Phase, 220 - 240, 50Hz
Nominal cooling capacity (Min~Max)		kW	6.3 (1.2~7.4)
Nominal heating capacity (Min~Max)		kW	7.1 (0.8~9.3)
Power consumption	Cooling/Heating	kW	1.63 / 1.64
EER/COP	Cooling/Heating		3.87 / 4.33
Max. running current		A	14.5
Sound power level	Indoor	Cooling/Heating	56 / 58
	Outdoor	Cooling/Heating	64 / 65
Sound pressure level	Indoor	Cooling (Hi/Me/Lo/Ulo)	44 / 39 / 35 / 25
		Heating (Hi/Me/Lo/Ulo)	44 / 38 / 34 / 28
	Outdoor	Cooling/Heating	54 / 54
Air flow	Indoor	Cooling (Hi/Me/Lo/Ulo)	20.5 / 18.1 / 15.7 / 10.4
		Heating (Hi/Me/Lo/Ulo)	22.5 / 19.0 / 16.5 / 13.1
	Outdoor	Cooling/Heating	41.5 / 41.5
Exterior Dimensions	Indoor	Height x Width x Depth	339 x 1197 x 262
	Outdoor		640 x 800(+71) x 290
Net weight	Indoor / Outdoor		kg 15.5 / 45.0
Refrigerant	Type/GWP		R32 / 675
Refrigerant	Charge	kg/TCO2Eq	1.25 / 0.844
Refrigerant piping size	Liquid/Gas	ø mm	6.35(1/4") / 12.7(1/2")
Refrigerant line (one way) length		m	Max. 30
Vertical height differences	Outdoor is higher/lower	m	Max. 20 / Max. 20
Outdoor operating temperature range	Cooling	°C	-15~46
	Heating		-15~24
Clean filter			Allergen Clear Filter x 1, Photocatalytic Washable Deodorizing Filter x 1
Energy Class (Cooling/Heating)			A+ +/A++
SEER			8.10
SCOP (Average climate)			4.70
Pdesign (cooling/heating(@-10°C))		kW	6.30/5.40
Annual Electricity Consumption (cooling/heating)		kWh/a	273/1608
Designated Heating Season			Average

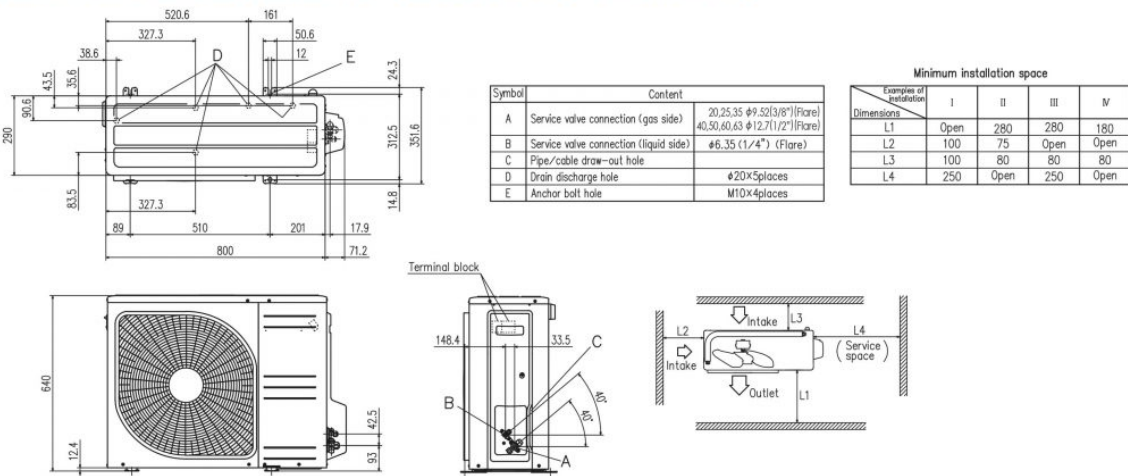
- The data is measured under the following conditions(ISO-T1, H1). Cooling: Indoor temp. of 27°CDB, 19°CWB, and outdoor temp. of 35°CDB. Heating: Indoor temp. of 20°CDB, and outdoor temp. of 7°CDB, 6°CWB.
 - Sound level indicates the value in an anechoic chamber. During operation these values are somewhat higher due to ambient conditions.
 - 'tonne(s) of CO2 equivalent' means a quantity of greenhouse gases- expressed as the product of the weight of the greenhouse gases in metric tonnes and of their global warming potential.
- *SEER/SCOP are based on EN14825:2016 and Commission regulation (EU) No.2016/2281

Schematics

SRK63ZR-W SRK71ZR-W SRK80ZR-W SRK63ZR-S SRK71ZR-S SRK80ZR-S SRK100ZR-S



SRC20ZSX-W,-S SRC25ZSX-W,-S SRC35ZSX-W,-S SRC40ZSX-W,-S SRC50ZSX-W,-S SRC60ZSX-W,-S SRC63ZR-W,-S





SRK71ZR-W / SRC71ZR-W

7.1 (2.3~7.8)

Indoor Unit : SRK71ZR-W

Outdoor Unit : SRC71ZR-W

Specifications

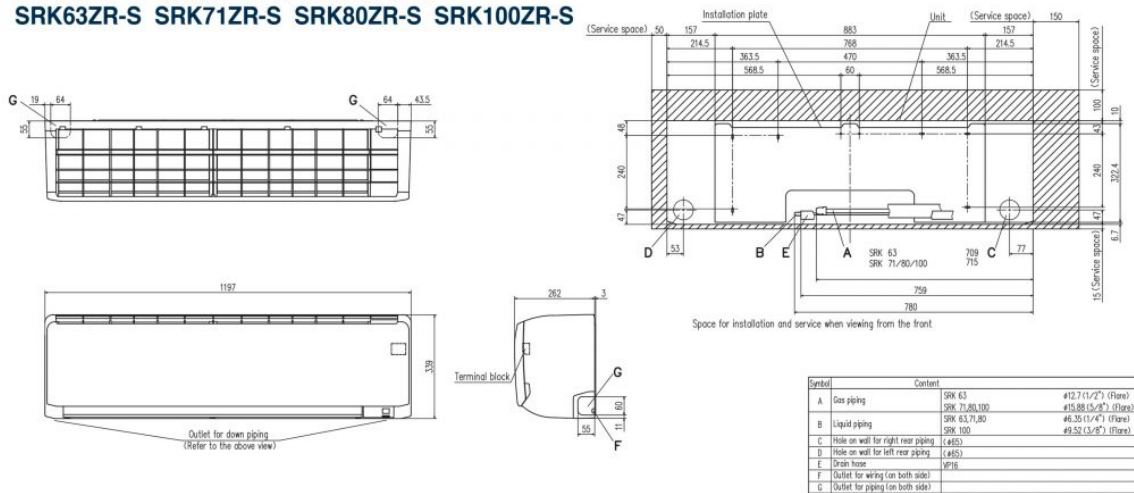
R32

Indoor unit			SRK71ZR-W
Outdoor unit			SRC71ZR-W
Power source			1Phase, 220 - 240, 50Hz
Nominal cooling capacity (Min~Max)		kW	7.1 (2.3~7.8)
Nominal heating capacity (Min~Max)		kW	8.0 (2.0~10.8)
Power consumption	Cooling/Heating	kW	1.93 / 1.95
EER/COP	Cooling/Heating		3.68 / 4.10
Max. running current		A	17
Sound power level	Indoor	Cooling/Heating	57 / 60
	Outdoor	Cooling/Heating	63 / 63
Sound pressure level	Indoor	Cooling (Hi/Me/Lo/Ulo)	44 / 41 / 37 / 25
		Heating (Hi/Me/Lo/Ulo)	46 / 39 / 35 / 28
	Outdoor	Cooling/Heating	53 / 51
Air flow	Indoor	Cooling (Hi/Me/Lo/Ulo)	20.5 / 18.6 / 16.2 / 10.4
		Heating (Hi/Me/Lo/Ulo)	25.0 / 19.8 / 17.3 / 13.3
	Outdoor	Cooling/Heating	55 / 43.5
Exterior Dimensions	Indoor	Height x Width x Depth	339 x 1197 x 262
	Outdoor		750 x 880(+88) x 340
Net weight	Indoor / Outdoor		kg 15.5 / 56.0
Refrigerant	Type/GWP		R32 / 675
Refrigerant	Charge	kg/TCO2Eq	1.5 / 1.013
Refrigerant piping size	Liquid/Gas	ø mm	6.35(1/4") / 15.88(5/8")
Refrigerant line (one way) length		m	Max. 30
Vertical height differences	Outdoor is higher/lower	m	Max. 20 / Max. 20
Outdoor operating temperature range	Cooling	°C	-15~46
	Heating		-15~24
Clean filter			Allergen Clear Filter x 1, Photocatalytic Washable Deodorizing Filter x 1
Energy Class (Cooling/Heating)			A+ +/A+
SEER			7.40
SCOP (Average climate)			4.50
Pdesign (cooling/heating(@-10°C))		kW	7.10/6.60
Annual Electricity Consumption (cooling/heating)		kWh/a	337/2055
Designated Heating Season			Average

- The data is measured under the following conditions(ISO-T1, H1). Cooling: Indoor temp. of 27°CDB, 19°CWB, and outdoor temp. of 35°CDB. Heating: Indoor temp. of 20°CDB, and outdoor temp. of 7°CDB, 6°CWB.
 - Sound level indicates the value in an anechoic chamber. During operation these values are somewhat higher due to ambient conditions.
 - 'tonne(s) of CO2 equivalent' means a quantity of greenhouse gases- expressed as the product of the weight of the greenhouse gases in metric tonnes and of their global warming potential.
- *SEER/SCOP are based on EN14825:2016 and Commission regulation (EU) No.2016/2281

Schematics

SRK63ZR-W SRK71ZR-W SRK80ZR-W SRK63ZR-S SRK71ZR-S SRK80ZR-S SRK100ZR-S



SRC71ZR-W SRC80ZR-W SRC71ZR-S SRC80ZR-S

